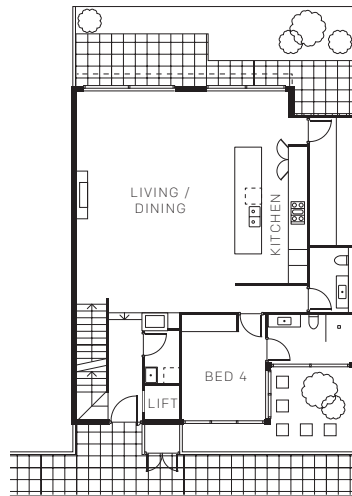


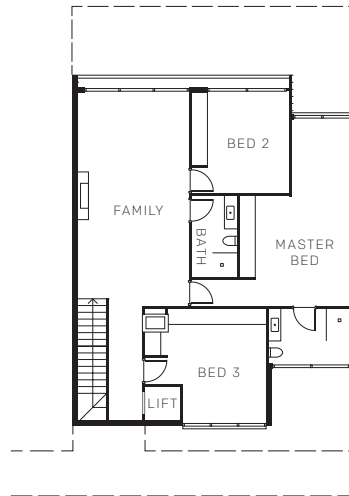
Residence 2

116 WALPOLE

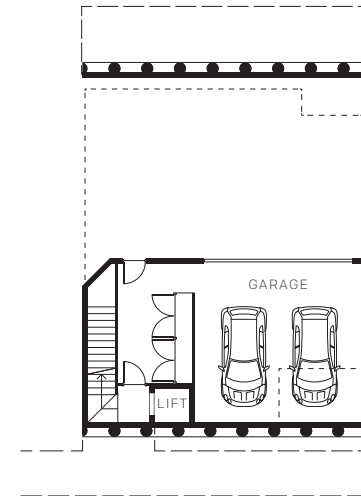
Ground



First Floor



Basement



Area summary

BASEMENT	61.7	SQM
GROUND FLOOR	124.0	SQM
COURTYARD	49.2	SQM
FIRST FLOOR / BALCONY	128.2	SQM
TOTAL	363.1	SQM



Overview



Area note

GROSS AREAS ARE CALCULATED FROM THE CENTRELINE OF COMMON WALLS AND THE OUTSIDE FACE OF EXTERNAL WALLS BASED ON THE PROPERTY COUNCIL OF AUSTRALIA METHOD OF MEASUREMENT (BALCONY AND TERRACE AREAS ARE NOT INCLUDED) / NET INTERNAL AREAS ARE CALCULATED FROM THE INSIDE FACE OF PERIMETER WALLS (BALCONY AND TERRACE AREAS ARE NOT INCLUDED) / ALL VALUES ARE APPROXIMATE AND MAY VARY DURING THE DESIGN DEVELOPMENT AND CONSTRUCTION PHASES